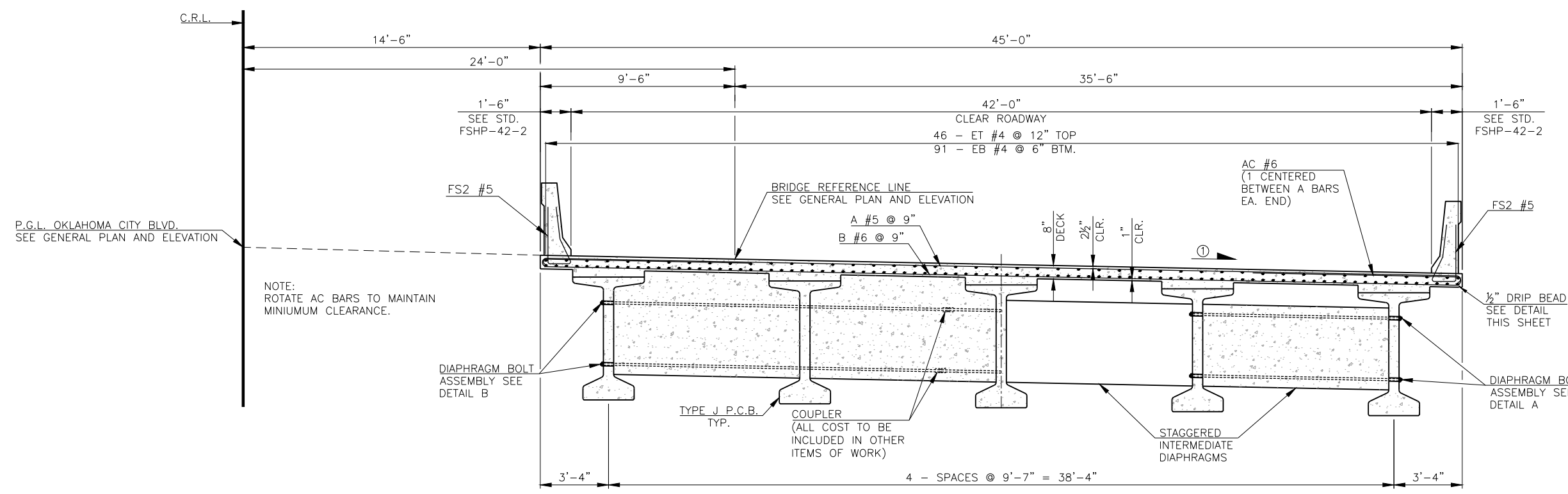
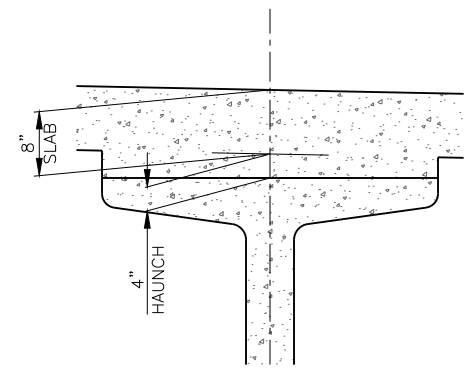


DESCRIPTION	REVISIONS	DATE



P.G.L. OKLAHOMA CITY BLVD.
SEE GENERAL PLAN AND ELEVATION

NOTE:
ROTATE AC BARS TO MAINTAIN
MINIMUM CLEARANCE.



BEAM HAUNCH DETAIL

NOTE:
PLAN QUANTITIES FOR CLASS AA CONCRETE
INCLUDE 20.2 CY FOR BRIDGE A AND 20.2 CY
FOR BRIDGE B FOR BEAM HAUNCHES. HAUNCH
HEIGHT SHOWN IS AT CENTERLINE BEARING ONLY,
MEASURED FROM BOTTOM OF DECK SLAB TO TOP
OF BEAM, AND VARIES ACROSS THE SPAN.
HAUNCH HEIGHT TO BE DETERMINED AFTER
ERECTION OF BEAMS TO PROVIDE FOR DEAD LOAD
DEFLECTION AND GRADE ADJUSTMENT, BUT THE
PAY QUANTITY WILL BE AS SHOWN ON THE PLANS.

FOR ADDITIONAL DETAIL OF FORM
LINER AT OUTSIDE FACE OF
PARAPET, SEE SHEET 137.

HALF SECTION AT END DIAPHRAGM

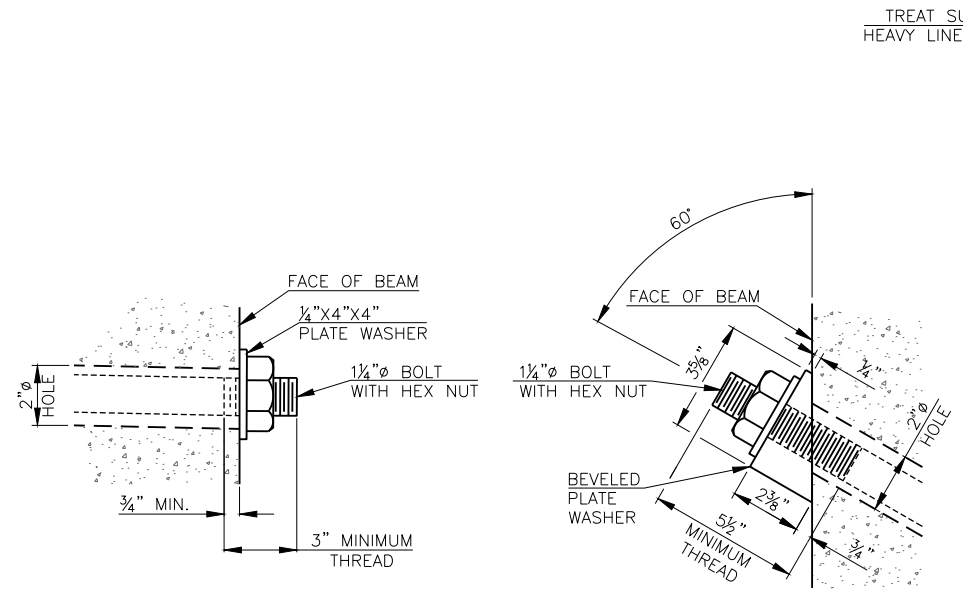
HALF SECTION AT INTERMEDIATE DIAPHRAGM

TYPICAL CROSS SECTION

(BRIDGE "A" SHOWN
BRIDGE "B" OPPOSITE HAND)

① FOR DECK CROSS SLOPE, SEE
SHEET 74.

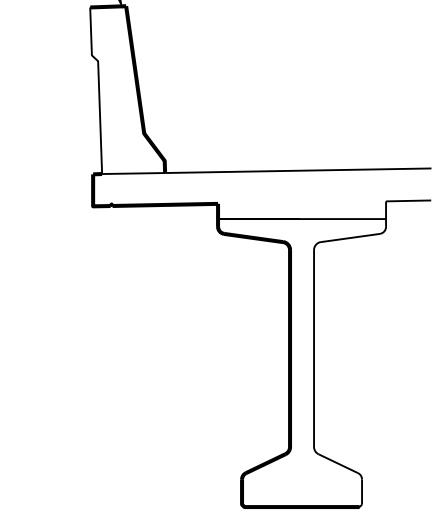
SUMMARY OF SUPERSTRUCTURE QUANTITIES			
ITEM	UNIT	BRIDGE A	BRIDGE B
PRESTRESSED CONCRETE BEAMS (TYPE J BT)	L.F.	637	637
SAW-CUT GROOVING	S.Y.	613	613
SEALED EXPANSION JOINT	LF.	49.5	49.5
42" F-SHAPED PARAPET	L.F.	262.5	262.5
STRUCTURAL STEEL	LB.	1,660	1,660
STAINLESS STEEL FIXED BEARING ASSEMBLY	EA.	5	5
STAINLESS STEEL EXP. BEARING ASSEMBLY	EA.	5	5
CLASS AA CONCRETE	C.Y.	192.6	192.6
EPOXY COATED REINFORCING STEEL	LB.	44,080	44,080
WATER REPELLENT (VISUALLY INSPECTED)	S.Y.	617	617



DETAIL A

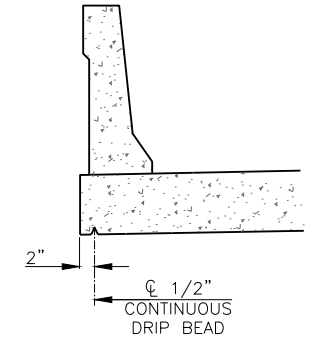
**DETAIL B
(PLAN VIEW)**

TREAT SURFACES INDICATED BY
HEAVY LINE WITH WATER REPELLENT



TRAFFIC RAIL, SLAB AND BEAM

**WATER REPELLENT TREATMENT
DETAILS**



DRIP BEAD DETAIL

DESIGN	T.A.C.	OKLAHOMA CITY BOULEVARD OVER CLASSEN BLVD.	OKLAHOMA COUNTY BRIDGE A & B
DRAWN	R.A.P.		
CHECKED	T.A.C.		
APPROV.	T.A.C.		
SQUAD	CEC		

TYPICAL CROSS SECTION

JOB PIECE NO. 17428(88) SHEET NO. 93